

W 1/4 COR SEC 21  
T 18N, R 64W

062625

RECEIVED  
LARAMIE COUNTY  
CHEYENNE, WY.

CERTIFIED LAND CORNER RECORDATION

DESCRIPTION OF CORNER EVIDENCE FOUND, AND ORIGINAL RECORD (if known) OCT 5 PM 3 00

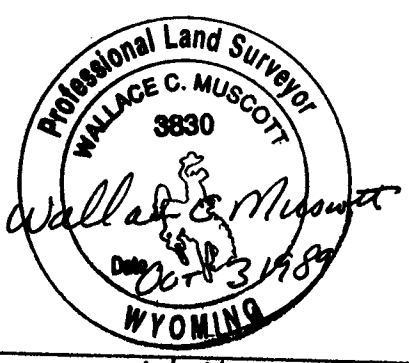
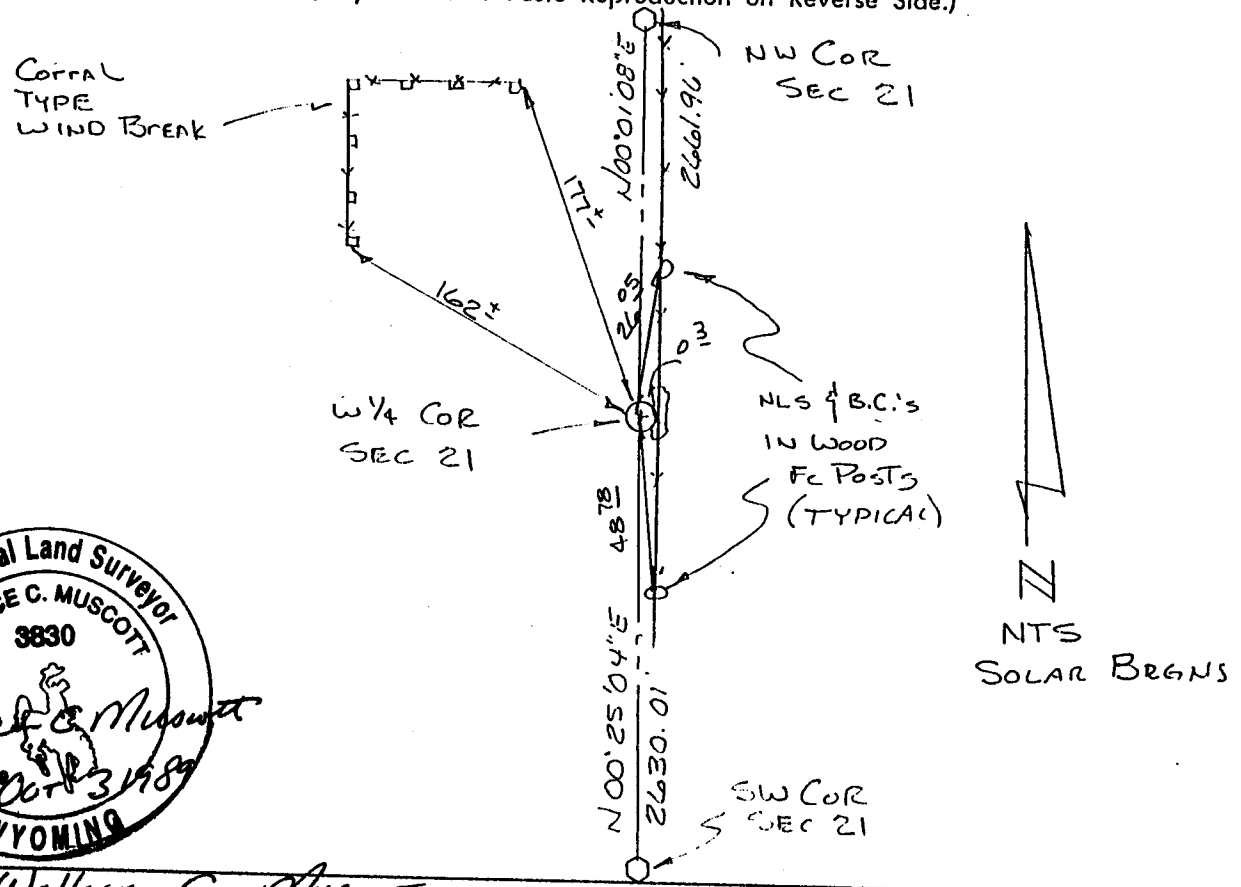
FOUND ORIGINAL SANDSTONE COR W/ 1/4 CHISELED ON WEST FACE. 15" X 11" X 3". UNDER A N-S FENCELINE. ORIGINAL RECORD IS A 16 X 12 X 3 SANDSTONE.

DESCRIPTION OF MONUMENT AND ACCESSORIES ESTABLISHED TO PERPETUATE THE ORIGINAL LOCATION OF THIS CORNER:

IN PLACE OF ORIGINAL STONE, SET A 5/8" X 30" REBAR W/A CORPS OF ENGINEERS BRASS CAP ON TOP & REFERENCED AS SHOWN BELOW. PLACED ORIGINAL STONE ALONG EAST SIDE & RAISED A MOUND OF STONE.

AUG 1 1989

SKETCH, WITH COURSE AND DISTANCE TO ADJACENT CORNER IF DETERMINED IN THIS SURVEY. (May Sketch or Paste Reproduction on Reverse Side.)



I, Wallace C. Muscott certify that I have carefully performed or reviewed the work done on the diagrammed corner as reported on this recordation form and approve the same.

Wallace C. Muscott 3830  
Signature of Surveyor Registration No.

STATE OF WYOMING,  
Office of Clerk and Recorder,  
County of \_\_\_\_\_

This "corner record" was filed for record on the \_\_\_\_\_ day of \_\_\_\_\_, 19\_\_\_\_, was noted on the cross-index plat and is assigned page No. \_\_\_\_\_, in book No. \_\_\_\_\_.

County Official			
Cross Index No. <u>P-9</u>	T. <u>18N</u>	R. <u>64W</u>	Mer.
_____	T. _____	R. _____	Mer.
_____	T. _____	R. _____	Mer.
_____	T. _____	R. _____	Mer.
_____	T. _____	R. _____	Mer.
_____	T. _____	R. _____	Mer.
_____	T. _____	R. _____	Mer.